



We recommend the use of this structure with the MPrime modules, certified by:



THE COMPANY

Specialized in the distribution of PV modules, kits and components, Mprime focuses on flexibility, excellence in service and continuous technological innovation, in order to provide our clients all over the world with the best portfolio, service and warranties. Part of Martifer Solar, MPrime benefits from a wide international experience in solar photovoltaic installations.

MPRIME SMARTOFFICE®

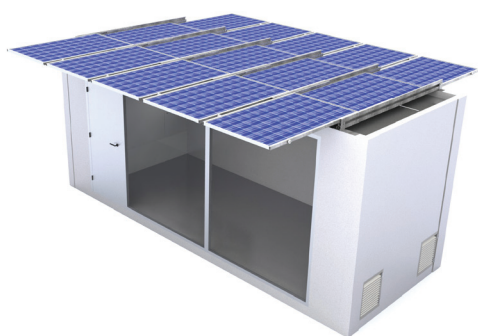
The SmartOffice® is a modular and an integrator system (solar, diesel generator, batteries, mini-Eolic, etc.) that could be designed to a very specific applications (on-grid or off-grid) and make an intelligent energy management. Easy and faster installation. Factory pre-assembled system.

MPRIME SMARTOFFICE® ADVANTAGES

- System Off-Grid
- Energy supply to basic equipment in a disaster area
- Energy supply to telecommunication tower
- Energy supply to schools, water pumps
- Stand-alone photovoltaic systems
- Connection to grid possible
- Construction field office
- Sales/marketing center
- Triage/medical Office
- Security Kiosk

WARRANTY

- Product warranty: 2 years



ELECTRICAL SPECIFICATIONS

	Version 1	Version 2	Version 3
PV Modules			
Quantity	15	15	15
Modules Peak Power (W)	250	250	250
Total Peak Power (W)	3750	3750	3750
Batteries			
Bank Voltage (V)	48	48	48
Bank Nominal Capacity (Ah)	200	500	800
Inputs			
Generator/Grid	✓	✓	✓
Output			
Type of Signal	True Sign Wave	True Sign Wave	True Sign Wave
Voltage (V)	230	230	230
Frequency (Hz)	50	50	48
Continuous Power Rating (VA)	3000	3000	3000
Output Power Ratings			
	Daily working hours		
3000W	0,7 hour	2 hours	3,8 hours
2000W	1 hour	3 hours	5,75 hours
1000W	2 hours	6 hours	11,5 hours
500W	4 hours	12 hours	23 hours

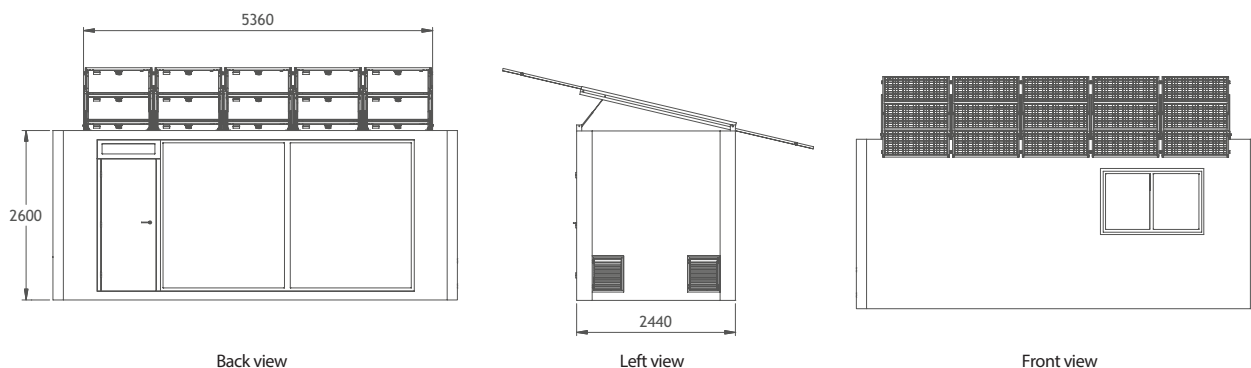
* Electrical Specifications considering two days of autonomy for the off grid system working at 25 °C

Other electrical specification may be possible on request

MECHANICAL SPECIFICATIONS

Dimensions	3460 x 2100 x 2100 mm
Weight	3200 kg
Structure	Steel Galvanized or Painted
Ingress Protection	Steel Galvanized or Painted

DIMENSIONS (All figures are in mm.)



PT065-TCO-MODULE/02/04-12/EN

CAUTION: read safety and installation instructions before using the product. (available in WWW.MPRIMESOLAR.COM).

DISCLAIMER: specifications included in this datasheet are subject to change without notice from the company.
In case of any conflicts/problems that may arise due to misinterpretation, prevailing conditions are the ones described in the original version (in English).



MPRIME SOLAR SOLUTIONS, S.A. ZONA INDUSTRIAL, APARTADO 17 / 3684-001 OLIVEIRA DE FRADES, PORTUGAL
TEL. +351 232 811 381 FAX. +352 232 767 750 E. INFO.PT@MPRIMESOLAR.COM WWW.MPRIMESOLAR.COM